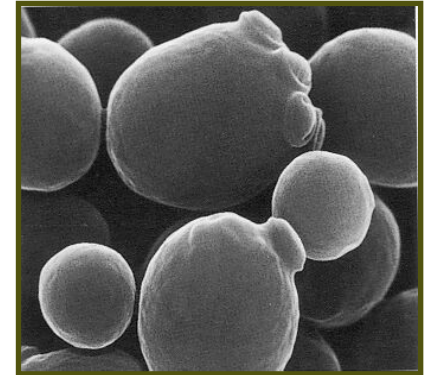


Molecular Biotechnology Laboratory

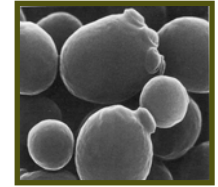
(Prof. Nancy Da Silva)

- Synthesis and Secretion of Proteins
- Engineering of Metabolic Pathways
- Development of Genetic Tools
- Yeast: *Saccharomyces cerevisiae* (Baker's Yeast)
 - Kluyveromyces lactis*
 - Kluyveromyces marxianus*
 - Pichia pastoris*
- Chinese Hamster Ovary (CHO) Cells
- *Escherichia coli*

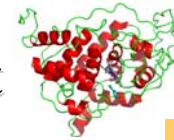


www.bath.ac.uk/bio-sci/research/profiles/wheals-a.html

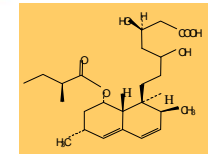
Current Yeast Research Projects



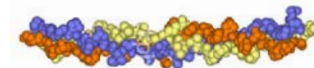
- Synthesis and Secretion of Active Lignin Peroxidase in Yeast



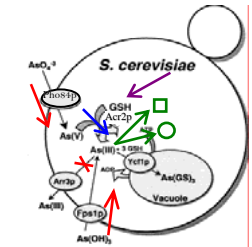
- Metabolic Engineering of Yeast for the Synthesis of Polyketides



- Synthesis of Cell-Responsive Biopolymers in Yeast



- Metabolic Engineering of Yeast as a Biosorbent for the Sequestration of Arsenic



- Optimized Heterologous Pathways for Ethanol Production in Yeast/Biofuels



- Metabolic Engineering of Yeast for the Production of Biorenewable Chemicals

